



2	Information
4	Features
6	Specimen
27	Character Set
34	Language Support

About Zaft²

Zaft² is a spaghetti-chugging, frontier-focused evolution of its predecessor, Zaft. The original Zaft was a hefty titling boldface, defined by bulky, sharp slab serifs and built upon a rigorously precise grid. While geometric precision remains a cornerstone of Zaft², it's also developed an acute taste for badly dubbed Western flicks and Acapulco Gold...

Like the wave of advertising display types that washed across industrialised nations in the 19th century, Zaft² relishes in this quirky genre - most famously embodied by the French Clarendon style of types. Over time, these bold, eye-catching forms became synonymous with the American frontier, their legacy further cemented by the heavily romanticised Wild West aesthetic that reached its peak in the mid-20th century.

Zaft² follows a similar trajectory into the pastiche expanse of the Old West with one foot planted firmly in the present. Its compact forms are rigid and tight yet counterbalanced by soft rounded corners which strike a playful harmony. A unique feature of Zaft² is the use of contextual alternatives which help create a more compact letter-fit.

To drag the Old West kicking and screaming into the present, Zaft² utilises variable fonts to offer a greater level of customisation. The family comes in three distinct variable fonts which each offer a unique axis of control. Variable A allows you to shift weight balance from top to bottom. Variable B symmetrically adjusts the serifs in relation to the counter-space. Variable C asymmetrically adjusts the serifs. The full family comes complete with all 3 variable fonts as well as 6 individual static font files.

2	Information
4	Features
6	Specimen
27	Character Set
34	Language Support

Zaft² A 1

Zaft² A 2

Zaft² B 1

Zaft² B 2

Zaft² C 1

Zaft² C 2

Zaft² Variable A

Zaft² Variable B

Zaft² Variable C

OpenType Features	Enclosed Dieresis	ss01
	Compact Forms	ss02
	Tiny ! & ?	ss03
	Contextual Alternatives	calt
	Superscript	sup
	Subscript	sub
	Localised Forms	locl
	Case Sensitive Forms	case

Language Support	260 Languages	p 30
------------------	---------------	------

Design	Jacob Wise, Céline Hurka
--------	--------------------------

First Release	2021
---------------	------

Last Update	April 2025
-------------	------------

Version	1.1
---------	-----

Copyright	WiseType® © 2021. All rights reserved. WiseType® is a registered trademark. This document may be used for evaluation purposes only.
-----------	---

2 Information
4 **Features**
6 Specimen
27 Character Set
34 Language Support

Enclosed Dieresis ss01

Swaps the default set of Umlauts to alternatives which are enclosed within the glyphs.

OpenType Features

In the majority of design software, you can enable OpenType features to max out your typographic experience!

These can usually be accessed in the Character/OpenType/Type options in most programmes. For websites, you can use the `font-feature-settings` CSS property to enable a specific feature. You can enable a feature by referencing its unique four-letter tag e.g., `ss01`, `orrm`, `liga`, `dlig`.

For instance, if you'd like to enable 'Compact Forms', you could write: `font-feature-settings: "ss02";`

Compact Forms ss02

Swaps to more compact alternative glyphs to create a tighter fit.

* A1/A2 only

Tiny !/? ss03

Swaps the exclamation and question mark to alternatives with smaller periods.

Contextual Alternatives calt

Swaps in alternative glyphs based on context to create a more compact fitting.

* A1/A2 only

Superscript sups

Substitutes figures and basic lowercase with smaller, top aligning glyphs.

Subscript subs

Substitutes figures with smaller, bottom aligning alternatives.

Off

Äpfel Öl

Cattle

U Wot!?

Are we spys?

BIG cow 193

H2O2

On

Äpfel Öl

Cattle

U Wot!?

Are we spys?

BIG^{COW} 193

H₂O₂

- 2 Information
- 4 **Features**
- 6 Specimen
- 27 Character Set
- 34 Language Support

Localised Forms locl

Localised forms adjust characters to match the typographic conventions of different languages or regions. The following localisations are supported: Moldovan [MOL], Romanian [ROM], Dutch [NDL], Azerbaijani [AZE], Turkish [TRK], Tatar [TAT], Crimean Tatar [CRT], Kazakh [KAZ].

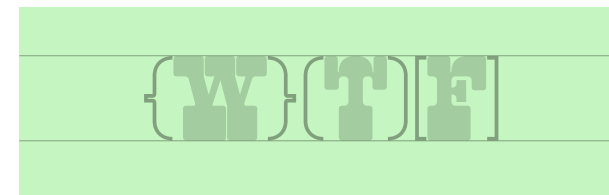
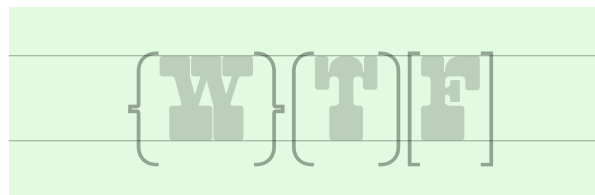
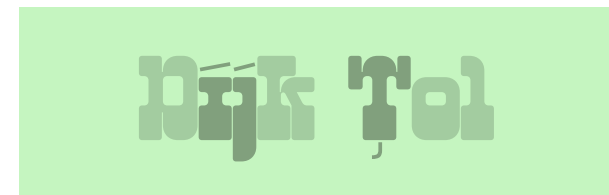
Case Sensitive Forms case

This feature raises a set of punctuation to fit better with capital forms.

Off



On



- 2 Information
- 4 Features
- 6 Specimen
- 27 Character Set
- 34 Language Support

A1

B1

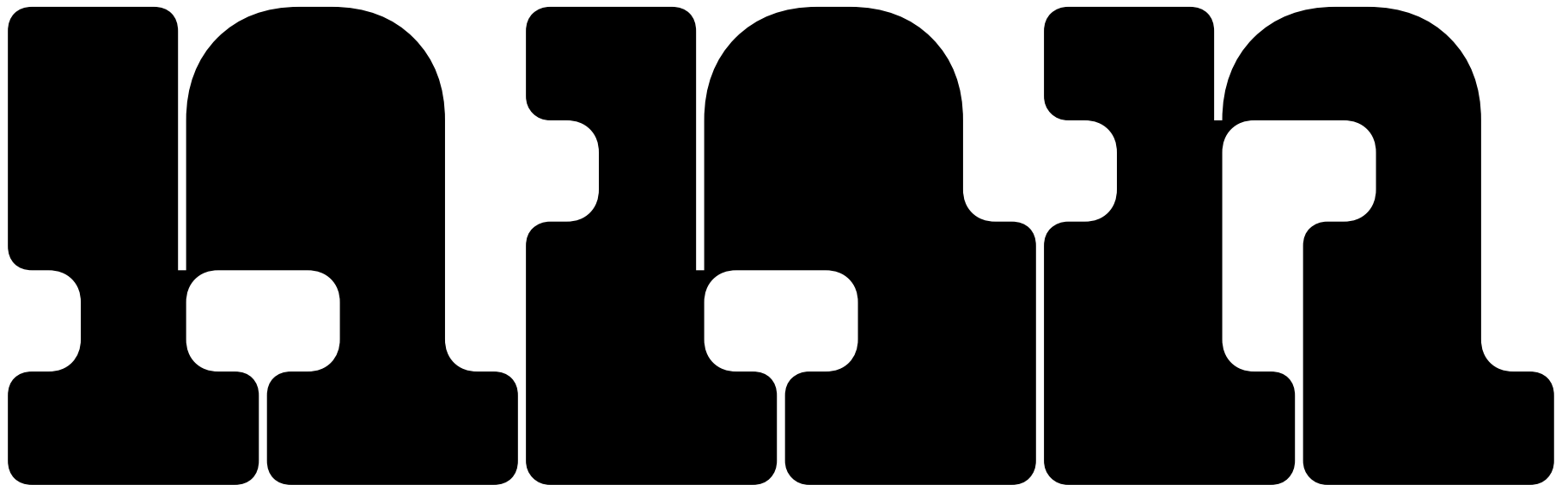
C1



A2

B2

C2



- 2 Information
- 4 Features
- 6 Specimen
- 27 Character Set
- 34 Language Support

A1

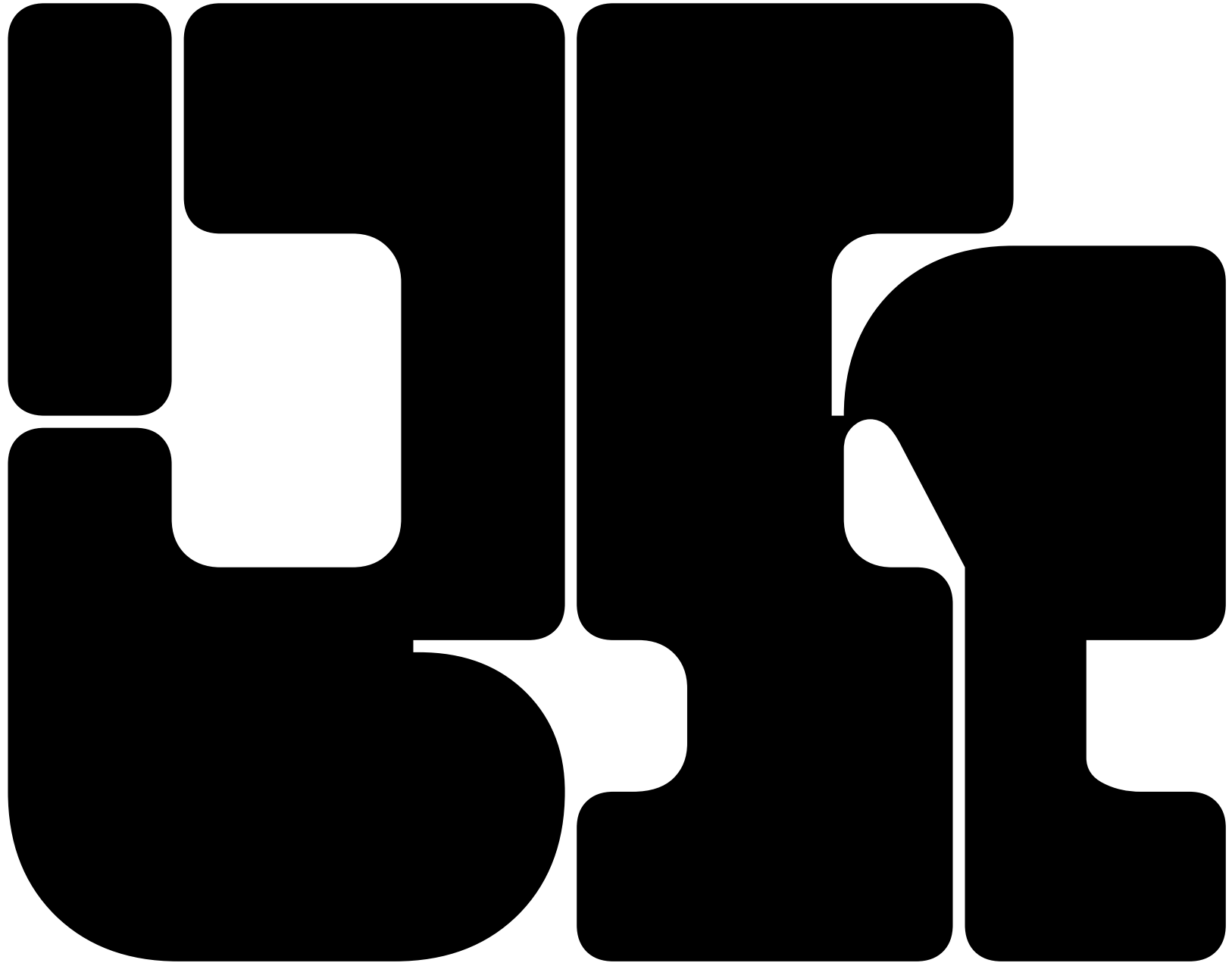
600 pt



- 2 Information
- 4 Features
- 6 **Specimen**
- 27 Character Set
- 34 Language Support

B1

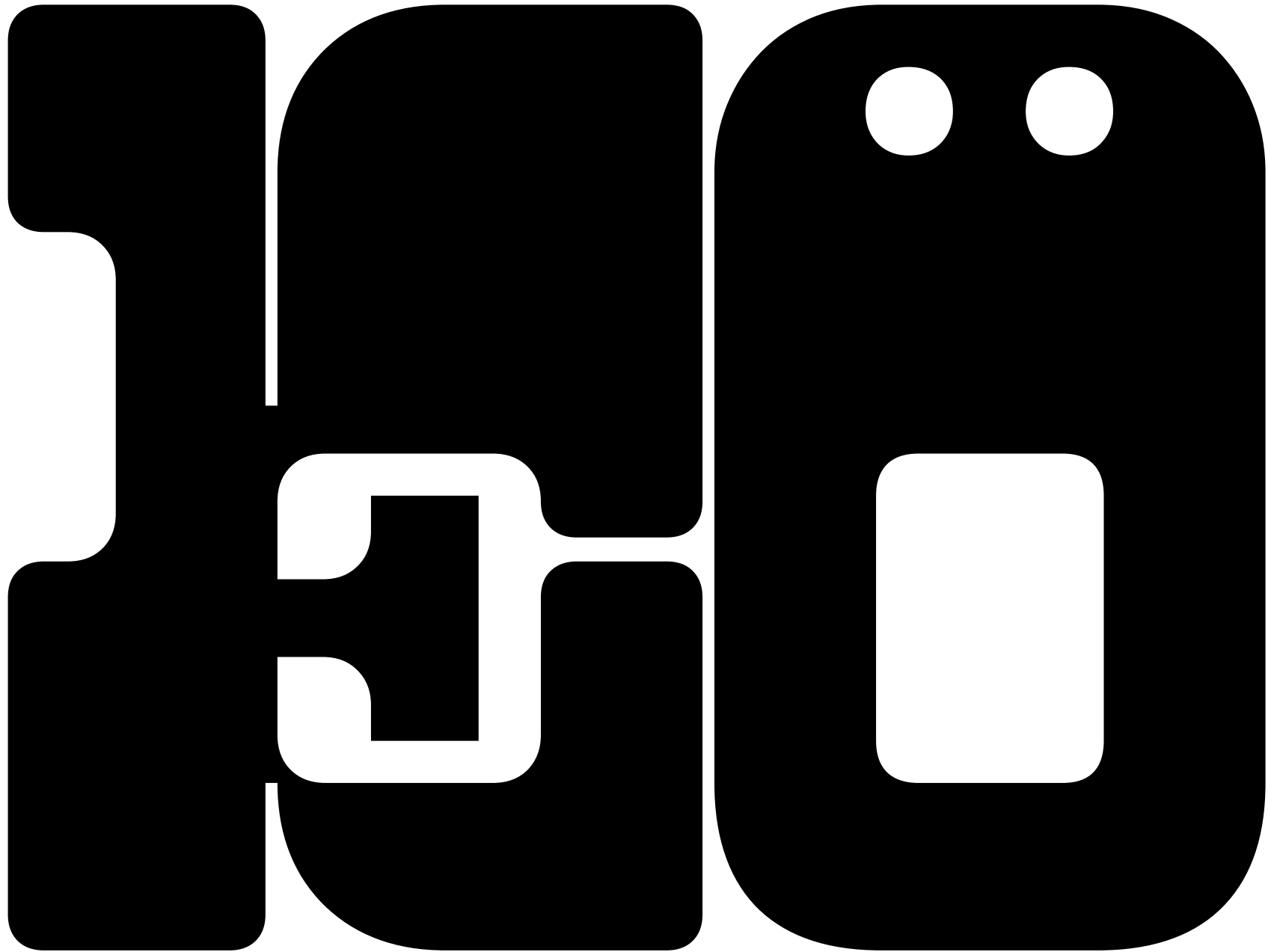
600 pt



- 2 Information
- 4 Features
- 6 **Specimen**
- 27 Character Set
- 34 Language Support

B2

600 pt



- 2 Information
- 4 Features
- 6 **Specimen**
- 27 Character Set
- 34 Language Support

C2

600 pt

Wise

- 2 Information
- 4 Features
- 6 Specimen
- 27 Character Set
- 34 Language Support

A1

200 | 160 pt

**PREMIER
BOURBON
SAYYAO.**

- 2 Information
- 4 Features
- 6 Specimen
- 27 Character Set
- 34 Language Support

B1

200 | 160 pt

ORRORS
IRRMER
ARRUM

- 2 Information
- 4 Features
- 6 Specimen
- 27 Character Set
- 34 Language Support

B2

200 | 160 pt

WiseType®
WiseType®
WiseType®

- 2 Information
- 4 Features
- 6 Specimen
- 27 Character Set
- 34 Language Support

C2

200 | 160 pt

O B C E M A
B C O M A
M B U A O

- 2 Information
- 4 Features
- 6 Specimen
- 27 Character Set
- 34 Language Support

B1

190 pt

WiseType

B2

190 pt

WiseType

Tiny !/?

- 2 Information
- 4 Features
- 6 Specimen
- 27 Character Set
- 34 Language Support

C1

190 pt

Börslests
,

C2

190 pt

Revolze

- 2 Information
- 4 Features
- 6 Specimen
- 27 Character Set
- 34 Language Support

A1

140 pt

COLOMBIAN

A2

140 pt

FC. UNITED

- 2 Information
- 4 Features
- 6 **Specimen**
- 27 Character Set
- 34 Language Support

B1

140 pt

DEERANGED

B2

140 pt

DEYLONTIWE

- 2 Information
- 4 Features
- 6 Specimen
- 27 Character Set
- 34 Language Support

C1

140 pt

ZANZIBAR

C2

140 pt

ARANSAS

- 2 Information
- 4 Features
- 6 Specimen
- 27 Character Set
- 34 Language Support

A1

95 | 95 pt

Big Code Slobbers
(MAY 10TH 1869)

Superiors

Case Sensitive Forms

Compact Forms

Contextual Alternatives

A2

95 | 95 pt

SAGUARÓ CACHITOS
MISCAL «PEYOTLE»

Case Sensitive Forms

Enclosed Dieresis

- 2 Information
- 4 Features
- 6 Specimen
- 27 Character Set
- 34 Language Support

B1

95 | 95 pt

He couldn't teach
a hen to cluck!

B2

95 | 95 pt

“Never run a business
with a six-guns”

- 2 Information
- 4 Features
- 6 Specimen
- 27 Character Set
- 34 Language Support

C1

95 | 95 pt

Charity covereth
multitude of sins

Contextual Alternatives

C2

95 | 95 pt

The Bridge
Monstone, [AR]

Case Sensitive Forms

Contextual Alternatives

To constitute language or
give it life from within,
there is no essential and

Contextual Alternatives

Pre-eminent, because words
have been allotted the task
and the power of represent

Compact Forms
Contextual Alternatives

**Mars Global Surveyor
suggesting the presence of
liquid water on Mars.**

Contextual Alternatives

**The "Gemini North" scope
(or Telescope) on Herwig's
Mercury Kea, looks deep into**

Contextual Alternatives

C1

60 | 65 pt

The collection of all
topologies on a given fixed
set X , forms a complete

Contextual Alternatives

C2

60 | 65 pt

Willie Longley (1853–1929)
“I do not regret one moment
of my life.”

Contextual Alternatives

2 Information
4 Features
6 Specimen
27 Character Set
34 Language Support

260 Languages

For languages with multiple writing scripts, the Latin version is supported.

Acheron	Czech	Ladino	Pohnpeian	Turkish
Achinese	Danish	Latgalian	Polish	Turkmen
Achuar-Shiwiar	Dehu	Lithuanian	Portuguese	Tzeltal
Afar	Dutch	Lombard	Potawatomi	Tzotzil
Afrikaans	Eastern Arrernte	Low German	Purepecha	Uab Meto
Aguaruna	Eastern Oromo	Lower Sorbian	Páez	Umbundu
Alekano	English	Luba-Lulua	Quechua	Upper Guinea Crioulo
Alonquin	Faroese	Luo (Kenya and Tanzania)	Romanian	Upper Sorbian
Amahuaca	Fijian	Luxembourgish	Romansh	Venetian
Amarakaeri	Filipino	Macedo-Romanian	Rotokas	Veps
Amis	Finnish	Makonde	Rundi	Võro
Anaang	French	Malagasy	Samoan	Walloon
Andaandi, Dongolawi	Friulian	Malaysian	Sango	Walsler
Anuta	Gagauz	Maltese	Sangu (Tanzania)	Waray (Philippines)
Aragonese	Galician	Manx	Saramaccan	Warlpiri
Arbëreshë Albanian	Garifuna	Maore Comorian	Sardinian	Wayuu
Asháninka	German	Maori	Scots	Welsh
Ashéninka Perené	Gheg Albanian	Mapudungun	Scottish Gaelic	West Central Oromo
Balinese	Gilbertese	Marshallese	Sena	Western Abnaki
Banjar	Gooniyandi	Matsés	Seri	Western Frisian
Basque	Guadeloupean Creole French	Mauritian Creole	Seselwa Creole French	Wiradjuri
Batak Dairi	Gusii	Meriam Mir	Shawnee	Xhosa
Batak Karo	Haitian	Meru	Shipibo-Conibo	Yanesha'
Batak Mandailing	Hani	Minangkabau	Shona	Yao
Batak Simalungun	Hiligaynon	Mirandese	Shuar	Yucateco
Batak Toba	Hopi	Mohawk	Sicilian	Zapotec
Bemba (Zambia)	Huastec	Montenegrin	Silesian	Zulu
Bena (Tanzania)	Hungarian	Murrinh-Patha	Slovak	Záparo
Bikol	Icelandic	Mwani	Slovenian	
Bislama	Iloko	Mískito	Soga	
Borana-Arsi-Guji Oromo	Indonesian	Naga Pidgin	Somali	
Bosnian	Irish	Ndonga	Soninke	
Breton	Istro Romanian	Neapolitan	South Ndebele	
Buginese	Italian	Ngazidja Comorian	Southern Aymara	
Candoshi-Shapra	Ixcatlán Mazatec	Niuean	Southern Qiangdong Miao	
Caquinte	Jamaican Creole English	Nobiin	Southern Sami	
Caribbean Hindustani	Japanese	Nomatsiguenga	Southern Sotho	
Cashibo-Cacataibo	Javanese	North Ndebele	Spanish	
Cashinuhua	K'iche'	Northern Kurdish	Sranan Tongo	
Catalan	Kabuverdianu	Northern Qiangdong Miao	Standard Estonian	
Cebuano	Kaingang	Northern Uzbek	Standard Latvian	
Central Aymara	Kalaallisut	Norwegian	Standard Malay	
Central Kurdish	Kalenjin	Nyankole	Sundanese	
Chachi	Kamba (Kenya)	Occitan	Swahili	
Chamorro	Kaonde	Ojiltán Chinantec	Swedish	
Chavacano	Karelian	Orma	Swiss German	
Chiga	Kashubian	Oroqen	Tagalog	
Chiltepec Chinantec	Kekchí	Palauan	Tahitian	
Chokwe	Kenzi, Mattokki	Pampanga	Tedim Chin	
Chuukese	Khasi	Papantla Totonac	Tetum	
Cimbrian	Kimbundu	Papiamento	Tetun Dili	
Cofán	Kinyarwanda	Pedi	Toba	
Cook Islands Māori	Kituba (DRC)	Picard	Tok Pisin	
Cornish	Kongo	Pichis Ashéninka	Tokelau	
Corsican	Konzo	Piemontese	Tonga (Tonga Islands)	
Creek	Kven Finnish	Pijin	Tonga (Zambia)	
Crimean Tatar	Kölsch	Pintupi-Luritja	Tosk Albanian	
Croatian	Ladin	Pipil	Tumbuka	